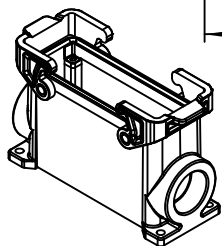
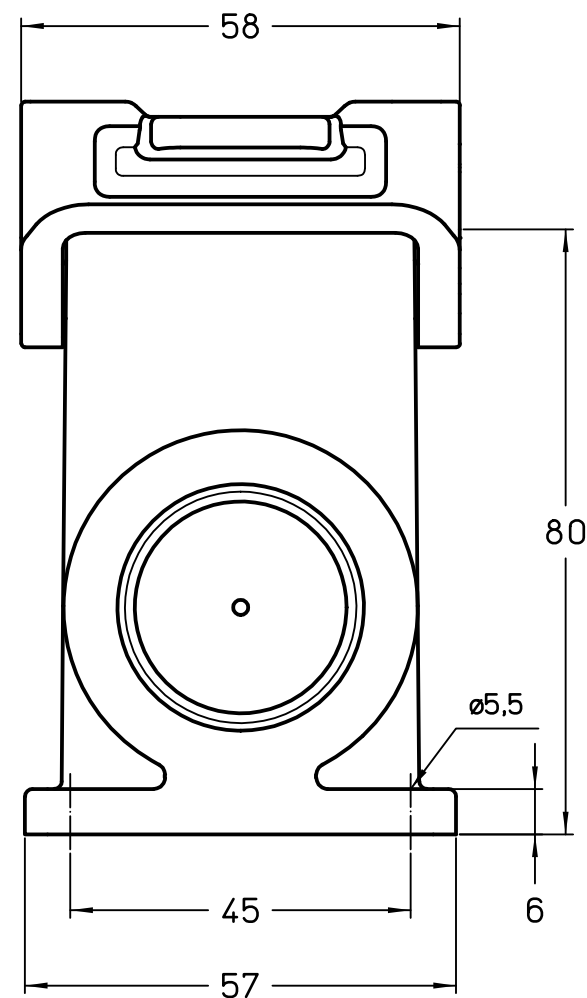
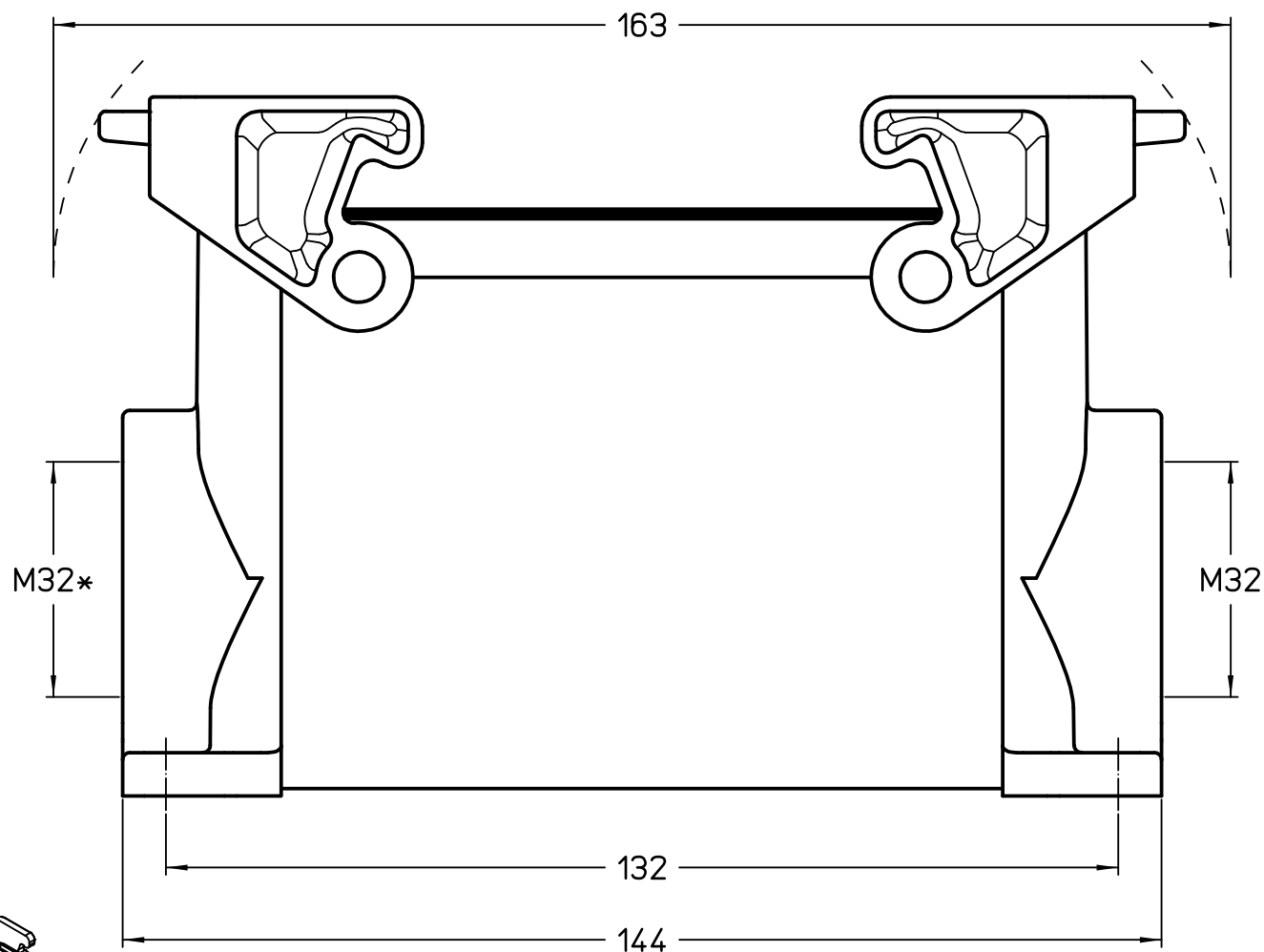


* closed hole



Dimensions
in mm

Simplified representation with dimensions without tolerance

Original Size A4

TMAP 24.32B

Date 06/11/23

Insulating surface mounting housing, size "104.27", 1x M32 side entry,
with 2 levers, with integrated PE jumpers - T-Type

Sign. G. Renna

Scale
1:1

